

# **Cmdt Gideon Scheepers Shooting Range Code of Conduct**

The Range Rules and Member Code of Conduct provide for a safe and friendly environment for members and guests. All members are expected to read, be familiar with, and abide by the Range Rules and the Member Code of Conduct. Enforcement and adherence to these rules is the duty and responsibility of every member.

## **THE CODE IS CENTRED ON THE PRINCIPLES OF:**

1. Respect for Life
2. Respect for Nature
3. Respect for the Law, and
4. Respect for shooters, the land owners, fellow conservationists and members in control of the shooting range.

Shooting Range members uphold this code with diligence, in sincerity and with responsible accountability. While on the shooting range, members conduct themselves within the bounds of the following principles. Visitors need to be accompanied by a member and will their actions be the responsibility of the member.

## **THE AIM OF SFC TACTICAL SOLUTIONS**

To train any person from any walk of life to defend his or her loved ones' lives in any situation with the available firearms/weapons in his possession. The secondary aim is to train firearm owners to be effective in the art of marksmanship and to practise and maintain the skill. SFC Tactical Solutions reserves the right, to refuse the training of individuals or groupings when it comes to mind that the individual might be connected to criminal activities or other moral standards linked to possible terrorist motives.

## **THE MISSION OF SFC TACTICAL SOLUTIONS**

To provide cost-effective, professional and realistic training to all South Africans in the defence, combating and prevention of terror, violence and criminal activity.

## **AIM OF THE COMMANDANT GIDEON SCHEEPERS SHOOTING RANGE (KGSS)**

To allow harmony between the shooting community of the Klein Karoo and the students and by culturing good principles for the future of our sport and to establish the means to participate in organised shooting activities, which is accredited by NHSA. SAHGCA also accepts sport shooting activities on the KGSS (Cmdt Gideon Scheepers Shooting Range) as dedicated activities. T&C apply.

Members and their guests shall conduct themselves in accordance with the range rules. Members shall be considerate of other members while present at the range, while shooting, when volunteering, or participating in club activities. Members will refrain from the use of obnoxious, offensive or abusive language and behave in a civil manner with each other. Members shall not wilfully destroy KGSS property, engage in verbal or physical attacks on another member or guest, or act inappropriately when approached by a Range Safety Officer for safety violations.

Violations of the KGSS range rules and/or the Member Code of Conduct may result in any or all of the following:

1. Verbal warning or coaching at the time of the infraction.
2. Written warning for the infraction.
3. Suspension of membership privileges for a period of time to be determined by the KGSS Committee members and the Chief Range Safety Officer.
4. Revocation of membership to KGSS.

Written warnings, suspensions and revocations are matters that will be brought before the KGSS committee at the monthly meeting. The subject member will be notified of the time and place of the meeting and the member may address the KGSS committee on their own behalf. Not attending an investigation or hearing will result in the immediate suspension of membership.

The decisions of the KGSS committee regarding range rules, safety violations and the Member Code of Conduct are final.

#### **SAFETY ABOVE ALL**

1. No shooting target can ever compensate for a shooting friend being maimed or killed.
2. Experienced shooters are aware where other shooters or visitors are at all times.
3. We only shoot on designated targets and not on any other object.
4. We do not consume any alcohol before or during a shoot.
5. We perceive it as our responsibility and duty to immediately correct any transgression of safety rules or unsafe behaviour by anyone in our proximity - without prejudice and without fear or favour.
6. We obey the law and comply with all regulations as stipulated in the Firearms Control Act 60 of 2000.

#### **RESPECT FOR LANDOWNERS' RIGHTS AS WELL AS THOSE REPRESENTED AS MANAGEMENT MEMBERS OF CMDT/KMDT GIDEON SCHEEPERS SHOOTING RANGE**

1. Members look after the land and their host's property.
2. We close gates and do not start veld fires. When the last person leaves a fire, he will make sure it is dead and cold.
3. Treat the shooting range as your own backyard.
4. Use common sense.

#### **PUTTING SOMETHING BACK**

1. Members always put something back into their beloved activity of sport-shooting; and go out of their way to help young shots and hunters.
2. They act responsibly and within the law and support the collective effort of their fraternity to promote the activity.
3. They foster the spirit of goodwill and share the special magic of shooting as a cultural activity with hunters and sport-shooters all over the world.

#### **NO LITTERING**

Because of our respect for the environment we do not litter. We clean up behind ourselves, and even the litter of others. We pick up our own brass.

**GENERAL RULES**

1. The range will be open on predetermined periods as communicated through the different social media platforms. It is the member's responsibility to inform himself about the available periods before he drive to the shooting range. The applicable members or shooters must communicate in good time, what the code for the gate is.
2. All members will receive the code to the lock on the main gate. It will change from time to time. Only members are allowed to the shooting range and visitors (non-members) must be accompanied by a member at all times.
3. Any member, or paid range fee attendee for the applicable day, may bring only 1 non-shooting visitor, per visit, free and to no charge. If he has more than one non-shooting visitor, the second visitor must pay a full range fee, as well as any other following visitors. All range visitors, members and guests are required to review the range rules and complete the on-site indemnity/release of liability (waiver) with each guest, before shooting commence. Indemnities are available on the website of SFC Tactical Solutions. Complete the form and place it in the provided on-site box.
4. Guest(s) must remain with the member at all times and shoot on the same range as the member. Members are responsible for the safety and conduct of their guests and must supervise their guest(s) at all times.
5. Vehicles are allowed only on established roads and allocated parking areas.
6. The speed limit on the range is 3km/h.
7. No hunting or shooting of wildlife is permitted on the range. This includes snakes.
8. No member or guest may handle a firearm while under the influence of alcohol or a controlled substance. Alcohol may only be consumed after firearms have been stored. Alcohol may only be consumed in designated areas. Alcohol consumption is prohibited on all other areas of the range.
9. Each member is responsible for cleaning up their litter and waste before leaving the range. This includes shotgun shells. Trash receptacles are present on all of the ranges.
10. Guests are held to the same standards as any KGSS members. Members are required to be sure their guests follow all rules, regulations, and codes and are legally allowed to be in possession of and/or are mentally stable enough to be in possession of a firearm. KGSS and its subsidiaries reserves the right to refuse/deny KGSS members and/or applications and/or revoke KGSS memberships for misuse of facility and/or violation of those items stated above that are in a direct violation of, by said guest(s). Revocations of membership do not result in a refund.
11. The safe handling of firearms and courtesy towards others is paramount.
12. Members will always uphold and adhere to the 4 Rules of Gun Safety: All guns are always treated as if loaded. Never let the muzzle cover anything you are not willing to destroy. Keep your finger off the trigger until your sights are on the target. Be sure of your target and what is beyond it.
13. Members will adhere to the rules and regulations of each of the KGSS ranges and adhere to the rules as set by SFC Tactical Solutions.
14. Each member is responsible for acquainting themselves with the location of all facility ranges and possible danger zones and will abide by any and all signs posted on and around the KGSS facility. Members must familiarize their guests with these locations. Do not wander from established range, parking, and road area.

15. Each range is to be used only for the purpose for which it is constructed and all equipment must be approved prior to usage. All members shall treat the equipment and ranges with respect and report any and all equipment malfunctions and or maintenance needs to the KGSS committee members or to staff of SFC Tactical Solutions.
16. All members must police their own brass after each session, but only take the brass used by the member themselves.
17. All motor vehicles will be operated only on the facilities roads and shall be parked only in designated parking areas.
18. All members shall police their firing points and target areas and deposit trash in the trash barrels. Please leave the range in better condition than you found it.
19. There will be NO FIRING OF FULLY AUTOMATIC FIREARMS or exploding targets on the range by ANYONE at any time unless directly approved by the KGSS committee or SFC Tactical Solutions staff without express written consent.
20. Tracer rounds or any type of incendiary ammunition is strictly prohibited at the KGSS or unless directly approved by the KGSS committee or SFC Tactical Solutions staff without express written consent.

#### **SAFETY RULES**

1. Everyone who visits the range is required to SIGN-IN by completing and signing the range register; this includes shooters and spectators. Members may shoot without extra indemnity as you already have agreed upon the Code of Conduct.
2. The indemnity is in the register and it is your responsibility to READ it! The register will be placed in a waterproof container on the shooting range.
3. Eye and ear PROTECTION IS MANDATORY for all persons on the range. This includes shooters and spectators within a 30m distance from the shot.
4. Handling of firearms is ONLY permitted at designated shooting areas and for strict regard to safety.
5. You may ONLY REMOVE YOUR FIREARM from its bag on the firing line under supervision of the RO. No handling of firearms is permitted except on the firing line.
6. The RO is in control of the range and all must adhere to his commands.
7. Shooting in the direction of the backstop is the ONLY permitted direction of fire.
8. Shooting in any direction other than the designated direction of the backstop on the range is NOT ALLOWED.
9. You may ONLY shoot at approved targets.
10. Shooting on range signs and equipment is expressly NOT allowed.
11. Firearms types and calibres are to be used ONLY on the appropriate range for the specific firearm and calibre.
12. It is your DUTY TO ACT RESPONSIBLY and safely on the range. Should you notice anyone breaking the rules, it IS YOUR DUTY to act against such a person AND report this to the RO as a matter of urgency.
13. Never use alcohol or drugs before or while you are shooting.
14. Should anyone be found breaking the rules or damaging property or equipment, and shooting in non-specified areas or directions other than directed or behaving unsafely or irresponsibly in any means on the range, a formal written complaint will be made to the SAPS to recommend such a person being unfit to possess a firearm.

### **RANGE OFFICER (RANGE OFFICIAL) PROCEDURES**

KGSS does not provide full time RO's. Members are given training at orientation and act as member RO's per the following procedure:

The Range Officer (RO) has control of the range being used. If no RO is provided, the first member on the range is the RO for that range. If there are other shooter(s) on that range when the RO leaves the range, they designate another member on the range to be the RO for that range.

#### **Range commands are as follows:**

- a. Cease Fire (or whistle blow long continuous blow) – means stop firing immediately, remove finger from trigger, and wait for further commands. Anyone may call a Cease Fire for any reason.
- b. Unload and make safe – means to stop firing, open the actions on all firearms, place all firearms on the bench or in a rack (as equipped), and step back from the firing line.
- c. The range is safe – called after all firearms have been verified to be safe and it is safe for shooters to go down range. **ABSOLUTELY, NO HANDLING OR TOUCHING OF FIREARMS OR BOWS ONCE THE "RANGE IS SAFE" COMMAND IS GIVEN AND SHOOTERS ARE DOWN RANGE. SHOOTERS MUST STAND BEHIND THE FIRING LINE WHEN OTHERS ARE DOWN RANGE.**
- d. The range is closed – called when no one is down range and it is safe to resume shooting.
- e. You may load and make ready – all the shooters on the firing line may load their firearms and prepare to fire.
- f. Ready – this is called to notify the shooters that they may put a round in the chamber.
- g. Fire (or short whistle blow) – the shooters may now engage the target.
- h. Unload, make safe and hold for inspection – all shooters on the line must unload their firearms. Remove all ammunition from the firearm, make the firearms safe and hold open for the RO to inspect.
- i. Unload, make safe and declare – all shooters on the line must unload their firearms. Remove all ammunition from the firearm, make the firearms safe and declare in sequence that your firearm is safe and the chamber empty. Once you have done that you may place the firearm back in the holster, on the floor or in the bag.

It is imperative that all members follow these procedures at all times. Some other safety procedures include:

- a. Communicate with other members when you arrive at the range.
- b. Communicate with other members when you are leaving the range.
- c. Visually verify the firing line prior to calling RANGE IS SAFE.
- d. Visually verify down range prior to calling RANGE IS CLOSED
- e. If you see an unsafe act, a safety violation or an unsafe condition, call CEASE FIRE. Correct the situation prior to resuming shooting.

Failure to follow the RO's procedures can result in serious injury or death. Most accidental range deaths occur on the firing line or directly down range of the firing line because someone failed to heed safety protocols. Shooters must **STRICTLY ADHERE** to the RO's procedures and commands. Your life and your fellow members' lives depend on it.

### RANGE EMERGENCY PROCEDURE

The location of KGSS is remote. There is no landline service and cellular service is intermittent. While using the range it is highly recommended that members always have a charged cell phone available in case of emergency. Should a medical emergency arise that requires professional medical care, it is of the utmost importance to get the affected individual to professional medical care as soon as possible. In the event of a medical emergency:

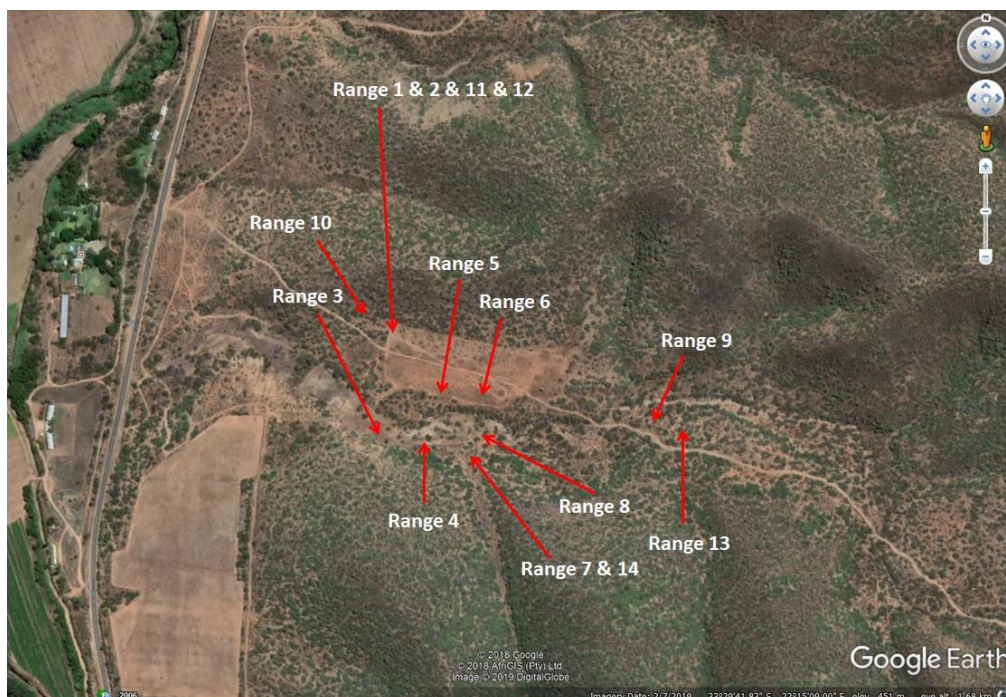
- Provide first aid to the individual that you are comfortable and/or qualified to provide.
- If the individual can be moved, get the individual into a vehicle and begin transport to Oudtshoorn Medi-Clinic. Emergency Services may meet you in route to Oudtshoorn Medi-Clinic.
- Contact the ambulance service via cell phone as soon as possible. Inform them that you have a medical emergency at Schoemanshoek at the Cmdt Gideon Scheepers Shooting Range and you are in route to Oudtshoorn Medi-Clinic.
- **Ambulance Services 10177**  
**071 681 6521**
- **Medi Clinic 044-272 0111**

### PRIMARY RANGE SAFETY RULES

These rules are effective on all ranges.

1. **ALWAYS KEEP THE FIREARM POINTED IN A SAFE DIRECTION AWAY FROM PEOPLE.**
2. **ALWAYS KEEP YOUR FINGER OFF THE TRIGGER, UNTILL READY TO FIRE.**
3. **ALWAYS TREAT A FIREARM IF IT WERE LOADED.**
4. **ALWAYS KNOW YOUR TARGET AND WHAT IS BEYOND IT.**

### RANGE OVERVIEW MAP



**Range 1 – Paper targets up to 300m (10 members at a time)**

1. Rifles and handguns using centre-fire calibres may be used at this range.
2. Rifles and handguns using rim-fire calibres may be used at this range.
3. Targets used on this range are paper targets either supplied by the KGSS or the individuals own targets.
4. .22LR silhouette targets may be used on this range.
5. All firing will be done from the elevated shooting line or the bench provided.

**Range 2 – Steel gongs and long range shooting (2 teams at a time) (1 x coach, 1 x shot per team)**

1. Only rifles with centre fire calibres designed for Long Range shooting may be used at this range.
2. All firing will be done from the elevated shooting line or the bench provided.
3. Only shoot at targets directly in front of shooter.
4. Only gongs may be engaged on this range.
5. Reactive Steel Targets-Shooting at steel targets/gongs comes with some risk as bullet splatter may be experienced. Everyone in the area must be wearing eye protection. Shooters assume all risk when using this range.

**Range 3– Individual Tactical Range**

1. Only centre-fire handguns, self-loading rifles and shotguns may be used at this range.
2. All firing will be done from a designated firing point.
3. Only shoot at targets directly in front of shooter.
4. Reactive Steel Targets-Shooting at steel targets/gongs comes with some risk as bullet splatter may be experienced. Everyone in the area must be wearing eye protection. Shooters assume all risk when using this range.
5. All spectators and non-shooting participants must stay within the 'safety zone' while a shooter is on the line.
6. Paintball guns and airsoft type firearms may be used on this range.

**Range 4 – Tyre "Kill house"**

1. Only centre-fire handguns, self-loading rifles and shotguns may be used at this range.
2. All firing will be done from a designated firing point.
3. Only shoot at targets directly in front of shooter.
4. Reactive Steel Targets-Shooting at steel targets/gongs comes with some risk as bullet splatter may be experienced. Everyone in the area must be wearing eye protection. Shooters assume all risk when using this range.
5. All spectators and non-shooting participants must stay within the 'safety zone' while a shooter is on the line.
6. Paintball guns and airsoft type firearms may be used on this range.

**Range 5 – Standard Range**

1. Only centre-fire handguns, self-loading rifles and shotguns may be used at this range.
2. All firing will be done from a designated firing point.
3. Only shoot at targets directly in front of shooter.

4. Reactive Steel Targets-Shooting at steel targets/gongs comes with some risk as bullet splatter may be experienced. Everyone in the area must be wearing eye protection. Shooters assume all risk when using this range.
5. All spectators and non-shooting participants must stay within the 'safety zone' while a shooter is on the line.
6. Paintball guns and airsoft type firearms may be used on this range.

#### **Range 6 – Shotgun Range**

1. Only shotguns shooting 7 ½ or smaller size shot are permitted at this range. Handguns and rifles are not permitted to be used at this range.
2. Shotguns must be rendered safe (actions open and cased/bagged) when moving between firing points. Shotguns may be loaded only when the shooter is in the cage or on the firing point. Only one shooter is allowed in the cage or on the firing position at a time.
3. Hulls or live shells that fall to the ground must be removed but only after the shooting is complete and the station has been made safe.

#### **Range 7 – Assault Range for pistols, shotguns and semi – auto rifles**

1. Only centre-fire pistols, self-loading rifles and shotguns may be used at this range.
2. All firing will commence from a designated firing point.
3. Only shoot at targets directly in front of shooter.
4. Reactive Steel Targets-Shooting at steel targets/gongs comes with some risk as bullet splatter may be experienced. Everyone in the area must be wearing eye protection. Shooters assume all risk when using this range.
5. All spectators and non-shooting participants must stay within the 'safety zone' while a shooter is on the line.
6. Paintball guns and airsoft type firearms may be used on this range.

#### **Range 8 – Bush Lane Shooting Range**

1. Only centre-fire pistols, self-loading rifles and shotguns may be used at this range.
2. All firing will commence from a designated firing point.
3. Only shoot at targets directly in front of shooter.
4. Reactive Steel Targets-Shooting at steel targets/gongs comes with some risk as bullet splatter may be experienced. Everyone in the area must be wearing eye protection. Shooters assume all risk when using this range.
5. All spectators and non-shooting participants must stay within the 'safety zone' while a shooter is on the line.
6. Paintball guns and airsoft type firearms may be used on this range.

#### **Range 9 – Wooden "Kill house"**

1. Only centre-fire pistols, self-loading rifles and shotguns may be used at this range.
2. All firing will commence from a designated firing point.
3. Only shoot at targets directly in front of shooter.
- 4 All spectators and non-shooting participants must stay within the 'safety zone' while a shooter is on the line.
5. Paintball guns and airsoft type firearms may be used on this range.



**Range 10 – Archery Range**

1. No air rifles or firearms can be used on the Archery Range.
2. Crossbows are currently allowed as long as they do not damage the target backstops.
3. Arrows with broad-heads are only allowed on the Broad-Head Range.
4. Do not “sky draw” your bow. Draw your bow on a level plane so if an arrow is released before you are ready it will not fly beyond the backstop.
5. Shoot only at approved targets. Shooting at milk jugs, cans, cardboard boxes, etc. is not allowed.
6. Only shoot from designated shooting points. Do not shoot cross lane.

**Range 11 – Air Rifle Range**

1. Only air rifle/handgun type firearms may be used at this range.
2. All firing will commence from a designated firing point.
3. Only shoot at targets directly in front of shooter.
- 4 All spectators and non-shooting participants must stay within the ‘safety zone’ while a shooter is on the line.

**Range 12 – Rim fire .22 Rifle Range**

1. Only rim fire .22 firearms may be used at this range.
2. All firing will commence from a designated firing point.
3. Only shoot at targets directly in front of shooter.
- 4 All spectators and non-shooting participants must stay within the ‘safety zone’ while a shooter is on the line.

**Range 13 – Vehicle Anti-Hijacking Range**

1. Only centre-fire pistols, self-loading rifles and shotguns may be used at this range.
2. All firing will commence from a designated firing point.
3. Only shoot at targets directly in front of shooter.
4. Reactive Steel Targets-Shooting at steel targets/gongs comes with some risk as bullet splatter may be experienced. Everyone in the area must be wearing eye protection. Shooters assume all risk when using this range.
5. All spectators and non-shooting participants must stay within the ‘safety zone’ while a shooter is on the line.
6. Paintball guns and airsoft type firearms may be used on this range.

**Range 14 – Tactical Shotgun Bay**

1. Only shotguns may be used at this range.
2. All firing will commence from a designated firing point.
3. Only shoot at targets directly in front of shooter.
4. Reactive Steel Targets-Shooting at steel targets/gongs comes with some risk as bullet splatter may be experienced. Everyone in the area must be wearing eye protection. Shooters assume all risk when using this range.
5. All spectators and non-shooting participants must stay within the ‘safety zone’ while a shooter is on the line.
6. Shotguns may fire shot (including buck shot) or slugs.
7. Only stationary targets are to be used.

8. No aerial shooting is allowed in this range.
9. Members must provide their own club approved targets and remove when done.
10. Members are expected to dispose of spent hulls in the provided trash receptacle.

#### **FLAG COLORS AND MEANING**

- RED FLAG - This range is in use and only this range may be used.
- GREEN FLAG - This range is not in use, and may not be used. Look for red flag range.
- CASTLE FLAG - All ranges are closed for the day, and only the recreational area is open.

#### **CAMPING AREA # 1 RULES (PRIMITIVE CAMPING)**

1. There is NO firearm handling in this area. All firearms must be cased, stored or holstered.
2. Primitive camping spaces are available to club members on a daily basis. Non-members may be allowed to use spaces for a small fee with prior SFC approval.
3. Rules regarding the approval for open fires will be specified in the process of reserving spaces. Fuel for fires must be brought by the campers if applicable.
4. Campers must make use of the appropriate method of resolving toilet issues. Disposal of waste is the campers' responsibility and must be removed by them.
5. Only leave your tracks!

#### **CAMPING AREA # 2 RULES (TENTED CAMPING AREA)**

1. There is NO firearm handling in this area. All firearms must be cased, stored or holstered.
2. Tented camping spaces are available to club members on a daily basis. Non-members may be allowed to use spaces for a small fee with prior SFC approval.
3. Rules regarding the approval for open fires will be specified in the process of reserving spaces. Fuel for fires must be brought by the campers if applicable.
4. Campers must use the ablation as provided. No other means exist.
5. Only leave your tracks!

#### **CLASSROOMS AND RESTROOMS**

Each club member is responsible for using all Club facilities in the proper way. Please keep them clean and use them accordingly.

## **CHILDREN**

Children of all ages are welcome at KGSS as long as they are supervised at all times. The children will be the responsibility of the adult who brought them onto the shooting range, irrespective if they are the child or legal minor. Children/juniors are younger than 18 years.

#### **RANGE FEES/ENTRY FEES 2020**

At the current moment 1 March 2020 until further notice the range fee/entry fee will be R100 per person/shooter. If you are only visiting and not going to shoot, you do not have to pay the range fee per person as long as you are the only one accompanying the shooter. Any second and further on non-shooting visitor need to pay the full range fee. This range fee/entry fee must be paid on the day in cash, to the most senior KGSS member present. If none is available you may declare your presence and EFT the fee into the account of KGSS. Children (under the age of 18 years) may enter and shoot

at no cost. If you are a member of the KGSS you do not have to pay with every visit as you already have paid your membership fee. The range fee/entry fee/membership fee may change as the range develops. For the interim each shooter must bring his/her own paper target to practise on. The gongs on the range, is available for engagement at no extra cost.

### **FAMILY PACKAGE**

Membership for a family will be R1400/year and may include 4 members. These members may be two adults and two children/juniors.

For a family with more than two adults each adult may pay R700 each and children/juniors are free.

\*\*Family legally defines for direct family only.

### **DAMAGES AND BREAKAGES**

This needs to be addressed in a professional and honest manner. If you break something or engage on a target/gong and break or damage the target/gong caused by your bullet, you are responsible to remove the target, fix the target and replace the target within 14 calendar days after the incident. Failure to do so, will lead to your expansion until further notice without disciplinary hearing, until the target/gong is replaced. Children under your control will be handled in the same manner. Let's look after the equipment. It is the property of SFC Tactical Solutions. Some of the targets/gongs are the property of fellow members. Let us respect each other!

\*\*\*The KGSS or SFC Tactical Solutions may, at any time, make exceptions or changes to the rules of use for specific ranges for issues related to safety or to conduct the business of the club to the benefit of the membership.

### **"SILENCER SUNDAY"**

Any member/range attendee/day visitor/shooter is allowed to shoot on Sundays, only with the rifles/firearms that have 'silencers' or suppressors fitted to their firearms.

This rule may only be overruled if you have written authorisation from the KGSS committee.

### **SFC TACTICAL SOLUTIONS AND PIET SCHOEMAN EMPLOYEES AND OFFICIAL STUDENTS/HUNTERS/VISITORS RANGE FEE TO KGSS**

As part of the MOU (Memorandum of Understanding/lees agreement) between SFC Tactical Solutions and Piet Schoeman, any employee or guests of the employee/course leader on official business, are exempted from any range fees. Range fees in this regard are part of the service provided by Piet Schoeman and/or SFC Tactical Solutions.



#### **SHOOTING RANGE INDEMNITY FORM**

I, the undersigned, hereby indemnify SFC Tactical Solutions, its employees, the owner of the shooting range, the consultants to, members of or any other person acting for and on behalf of SFC Tactical Solutions (herein after referred to as "SFC") against any claims that may result from the acts of commission or omission of SFC, be they wilful, negligent, direct or indirect or consequential, for damages, injury, bereavement or loss of life (current or future) caused or allowed by SFC that I or my next-of-kin may suffer during the shooting activity, shooting competition and/or firearms training session (hereafter called "the event"). I hereby irrevocably renounce any claims, of whatever nature, that I or any of my next-of-kin or any minor under my supervision or control for the event, may bring against SFC or the owner of the shooting range and I hereby indemnify and hold SFC and the owner of the shooting range harmless from any claims that I, my next-of-kin or any minor under my supervision or control may bring. I accept liability for all damage, injury, bereavement or loss of life (current or future) to any person or property that may be caused by my negligent and/or deliberate acts of commission or omission during the event. In the case of a minor participating in the event in my presence (or absence), I hereby, by my signature or his/her signature, as the law may require, give him/her my unconditional permission to sign this indemnity and to participate in the event. I confirm furthermore that I am aware that the practice of the abovementioned activities is inherently dangerous and I undertake to follow all commands at all times. I undertake to practice safe firearms handling at all times. I declare that I have received copies of "Range Safety rules for Participants" and "Standard Commands on the Shooting Range", have read them, understood them and undertake to conform to the instructions contained therein.

**I furthermore declare that I have received the Code of Conduct (page 1 – 11) that accompanied this document. I have it in my possession, have read it, understand it, and by signing this indemnity abide by the rules and will therefore follow any or all instructions therein.**

**PRINT NAME**

**SIGNATURE**

**DATE**

**WITNESS ON BEHALF OF FUTURE MEMBER**

**AUTHORISED BY SFC TACTICAL SOLUTIONS**